



直流管状电机 DM25CE 说明书

52-1-9

附

点动设置

附加功能



重复设置取消点动功能

433MHz 868MHz CE
所有控制器都分别有 433MHz & 868MHz
具体参数以铭牌为准

E:Electronic / 电子型
Electronic Limit + Built-in Receiver
+ Resistance And Stop Function
电子行程限位 + 内置接收器
+ 遇阻停止功能

DM25CE管状马达

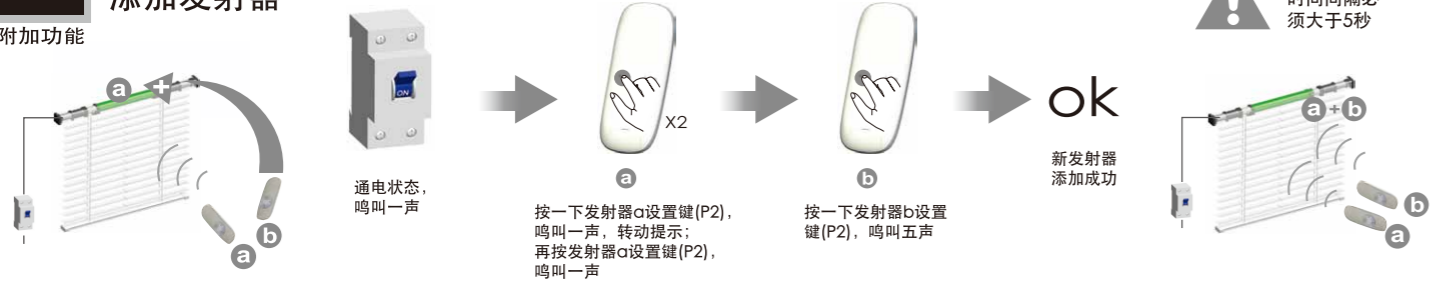
产品说明书



附

添加发射器

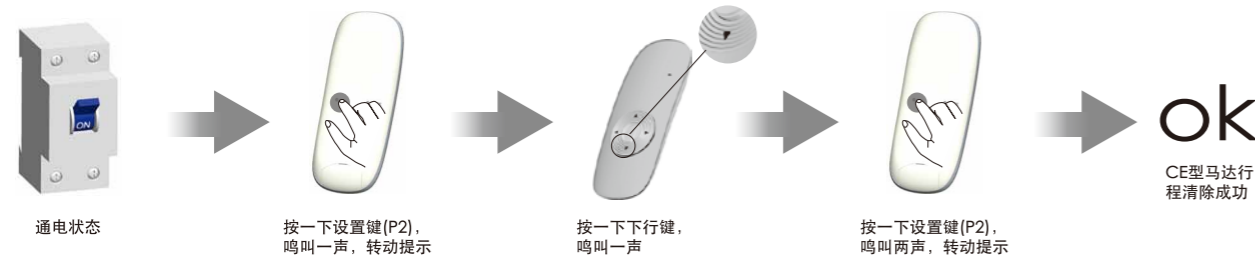
附加功能



附

清除CE型马达行程

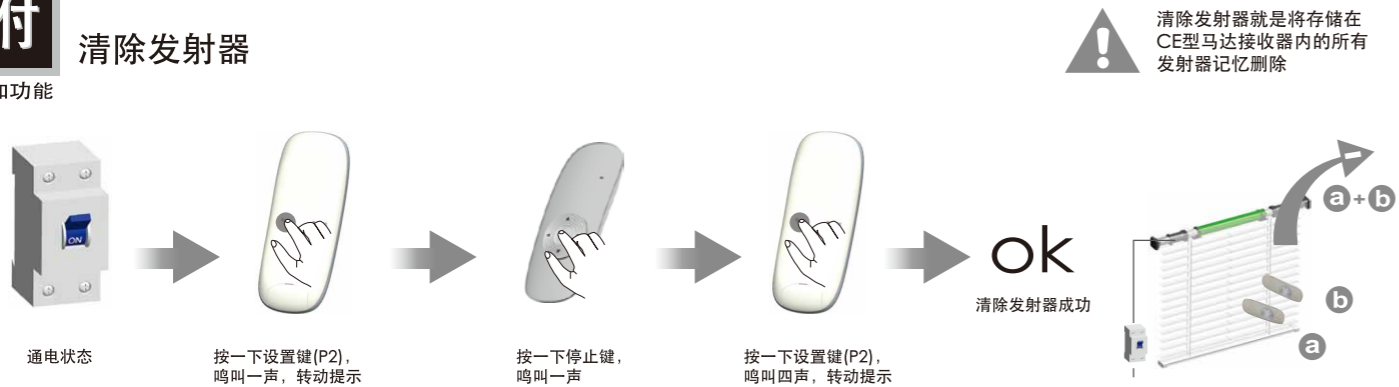
附加功能



附

清除发射器

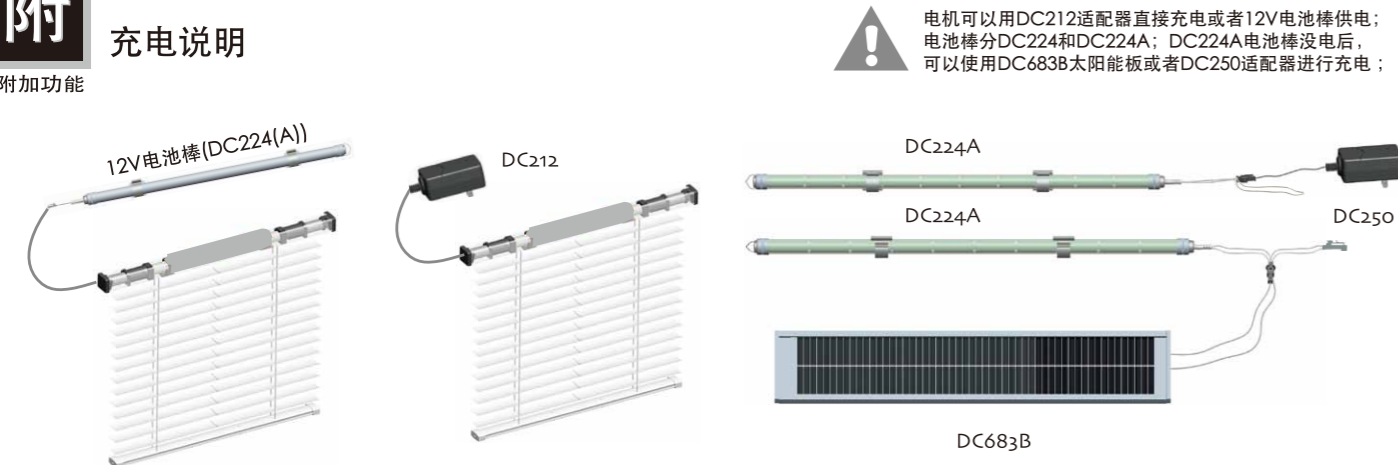
附加功能



附

充电说明

附加功能



版本: A/02

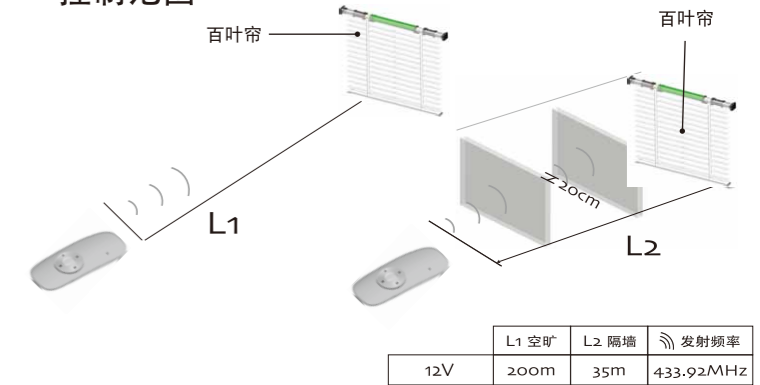
技

技术支持

- 5通道发射器 = 单通道发射器 × 5
- CE型马达
一个发射器通道最多可同时控制20台CE型马达
一台CE型马达最多可存储20个发射器通道, 存满20个通道之后, 如再添加新通道, 从最后通道依次循环覆盖存储。

使用前请务必设置行程, 设置方法请参考本说明书“5 设置上/下限位行程”。
群控频道对码无效, 删码、添码、设行程均有效。

控制范围



技

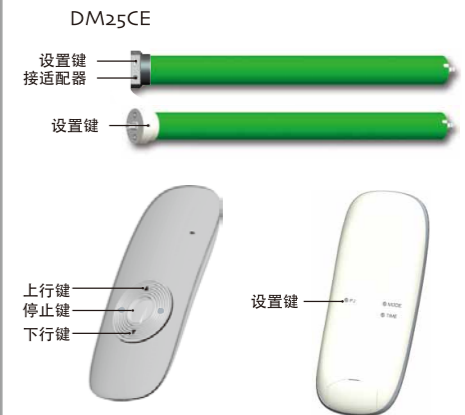
可适配的发射器

技术支持



DC316等无设置键的发射器, 同时按下上行键和停止键等于设置键

按键说明

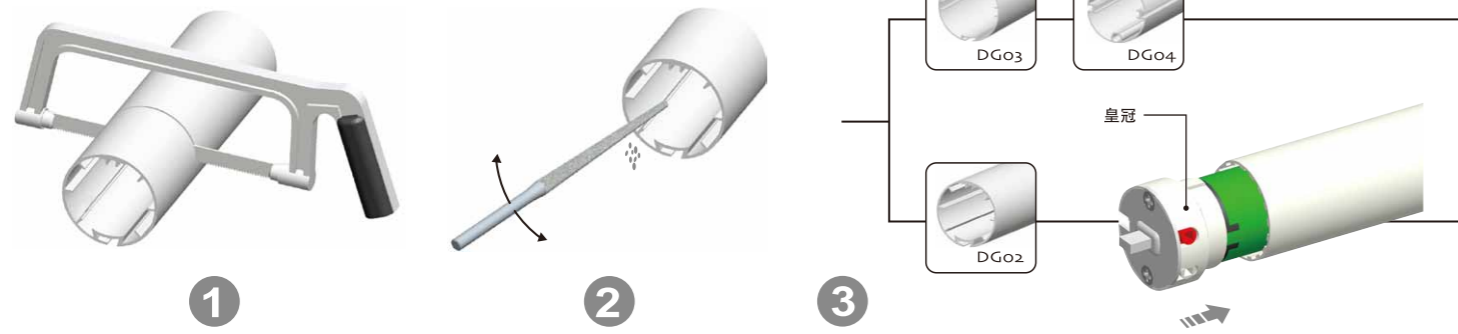


!

注意事项



1 皇冠安装



⚠️ 严禁打穿皇冠及内齿套

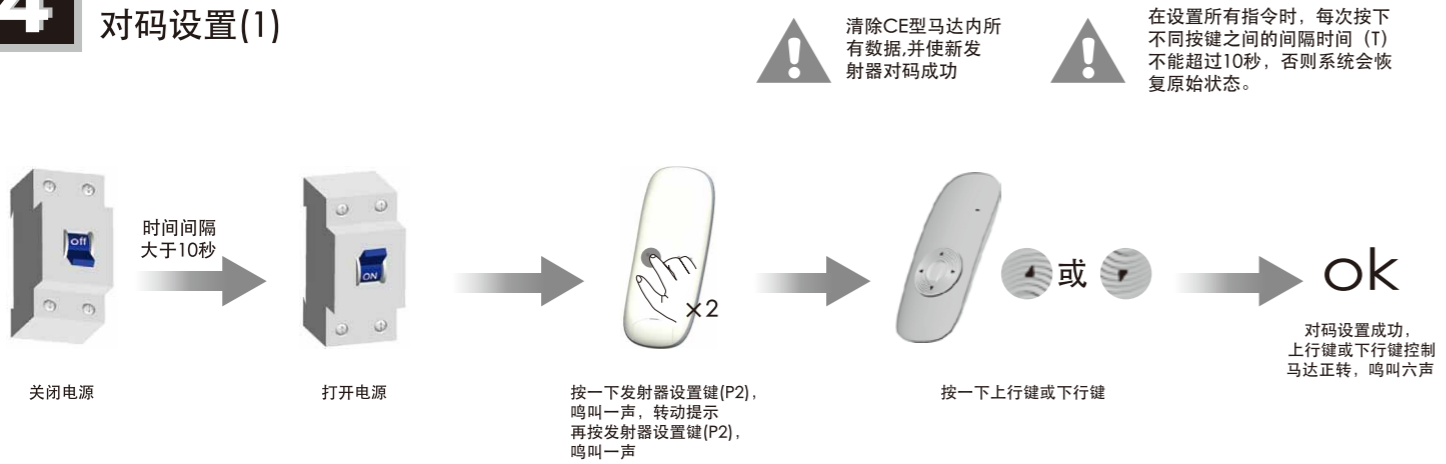
2 转轮安装



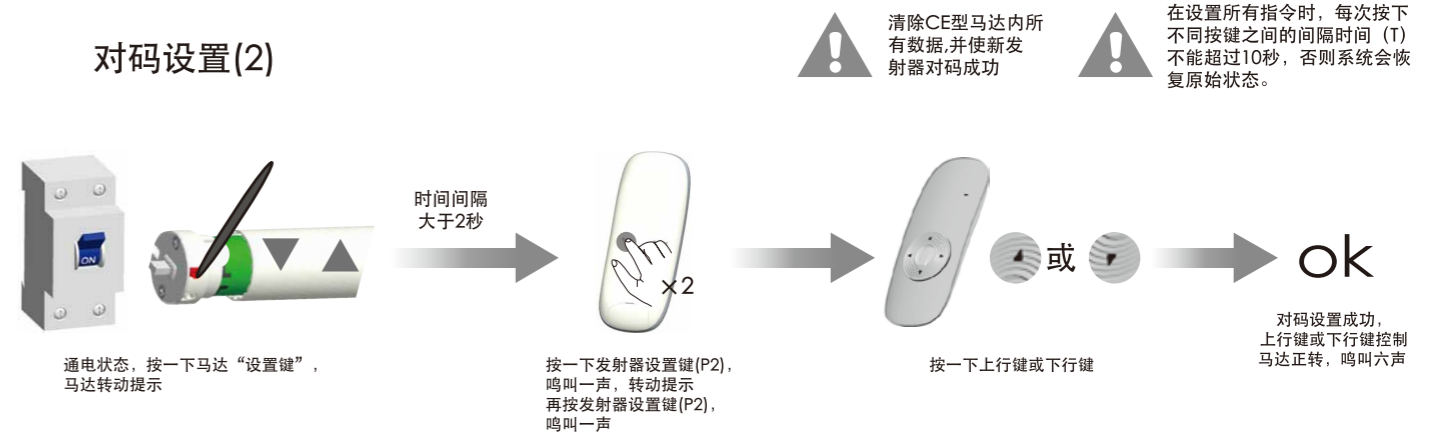
3 支架安装



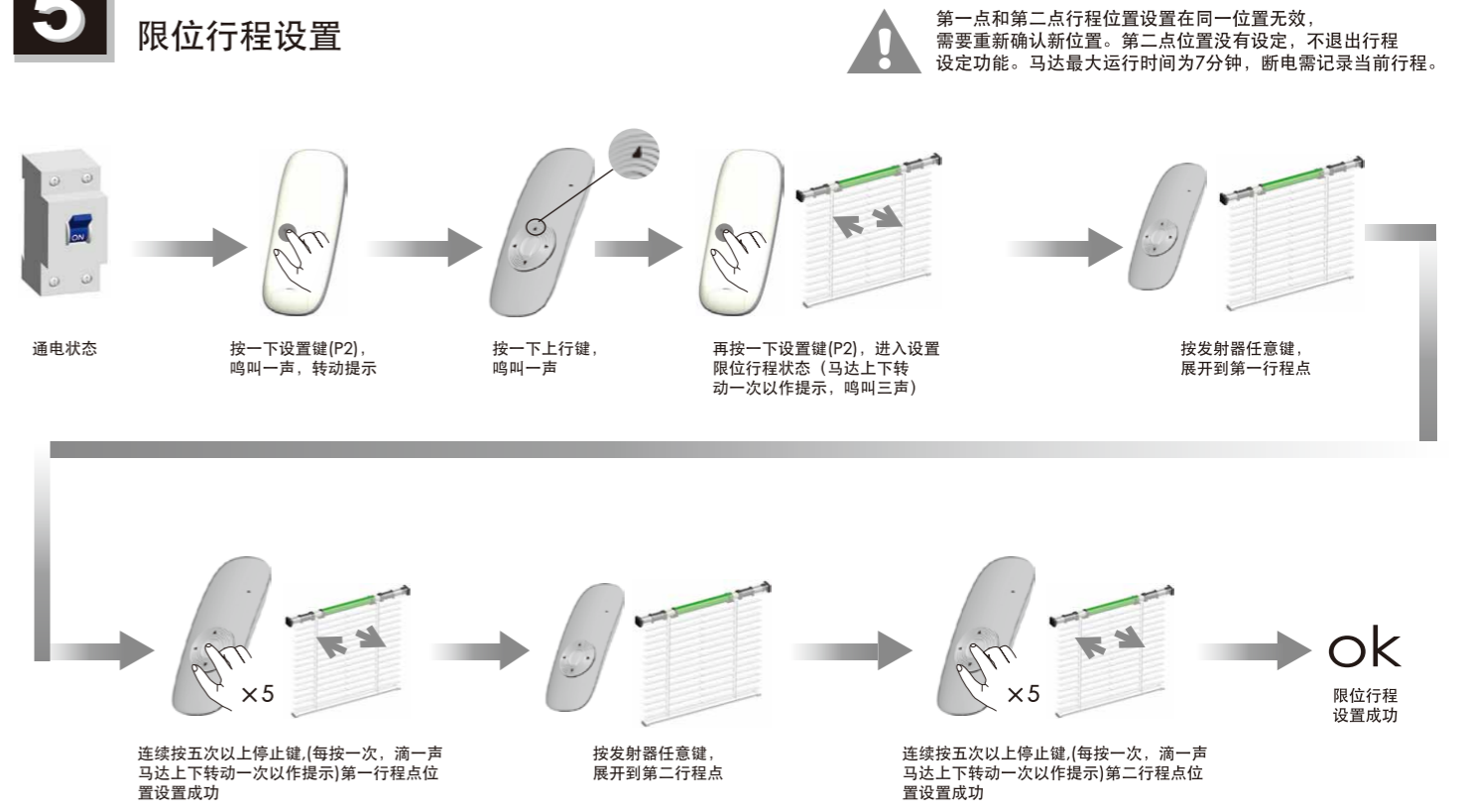
4 对码设置(1)



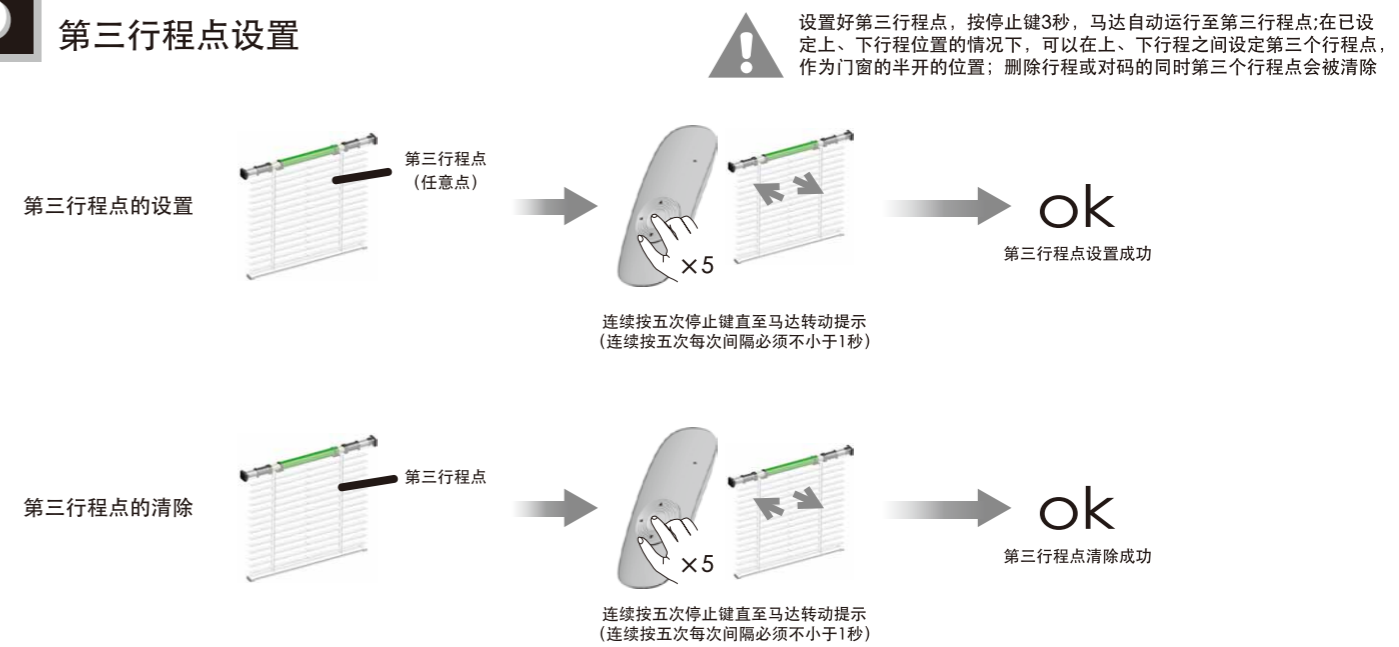
对码设置(2)



5 限位行程设置



6 第三行程点设置



A Additional Function

Dot-move setting

Switch on → Press emitter's P2 button, sound tip once with reverse tip → Press up button, sound tip once → Press down button, sound tip for one time with reverse tip → ok

Repeat setting, function is cancelled

Dot-move setting is ok, sound tip for three times

A Additional Function

Add emitter

Switch on, sound tip once → Press "a" emitter's P2 button, sound tip once with reverse tip. Then press "a" emitter's P2 again. Sound tip once → Press "b" emitter's P2 button, sound tip for five times → ok

The time period for POWER ON should be 5 seconds minimum

Emitter adding is ok

A Additional Function

Cancel the limit

Switch on → Press emitter's P2 button, sound tip once with reverse tip → Press down button, sound tip once → Press emitter's P2 button, sound tip for two times with reverse tip → ok

The limit switch of tubular motor has been deleted successfully

A Additional Function

Cancel emitter

Switch on → Press emitter's P2 button, sound tip once with reverse tip → Press stop button, sound tip once → Press emitter's P2 button, sound tip for four times with reverse tip → ok

To clean up the emitter means deleting all the memory of emitter and limit switch in the motor receivers

Cancelling is ok

A Additional Function

Rechargeable description

The motor can be charged by both DC212 or the 12V battery pole DC224 / DC224A. The difference between DC224 and DC224A is that DC224A is rechargeable by solar panel DC6838 or adaptor DC250.

All controls support 433MHz & 868MHz
Specific parameters to the nameplate shall prevail

E:Electronic
Electronic Limit + Built-in Receiver
+ Resistance And Stop Function

DM25CE Tubular Motor

Specification

Version No. : A/02

T Technical support

- 5-channel emitter = single channel emitter × 5
One channel of emitter can control 20 receivers at most at the same time.
- DM25CE Tubular Motor
One Electronic motor maximum can store 20 channels, over 20 channels, if still need add new channels, it will be repeating covered in turn from second channel.

Please set the limit position before use, as the setting method please see: 5 'set up/down limit position' as reference.
Group control programme is noneffective; deleting programme, adding programme and setting limit switch is effective

Control range

	L1 Open	L2 Partition	Emission frequency
12V	200m	35m	433.92MHz

T Technical Support

Matchable emitters

For the emitters without setting button like DC316, you can press up button and stop button at the same time to work as the same function as setting button.

Button specification

DM25CE

Setting button
It should be connected to a power adapter
Setting button

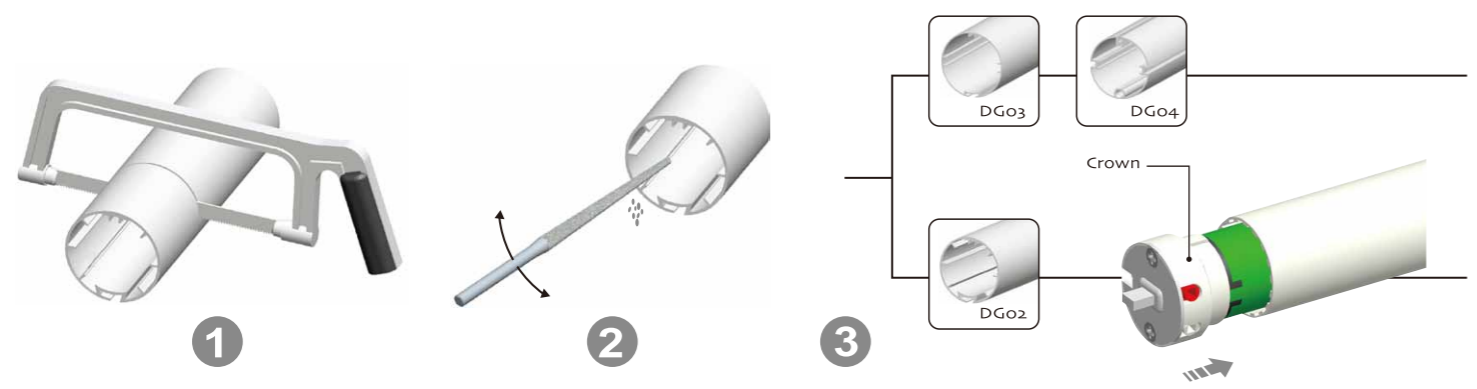
UP
STOP
DOWN

Setting button

Attention

Incorrect actions: dropping in water, using a hammer, using a power drill.

1 Crown installation



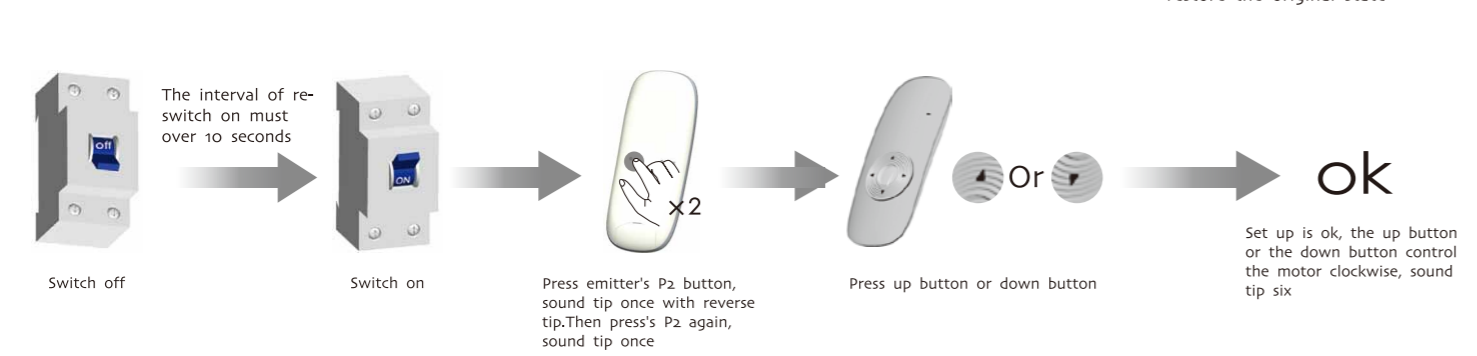
2 Drive adapter installation



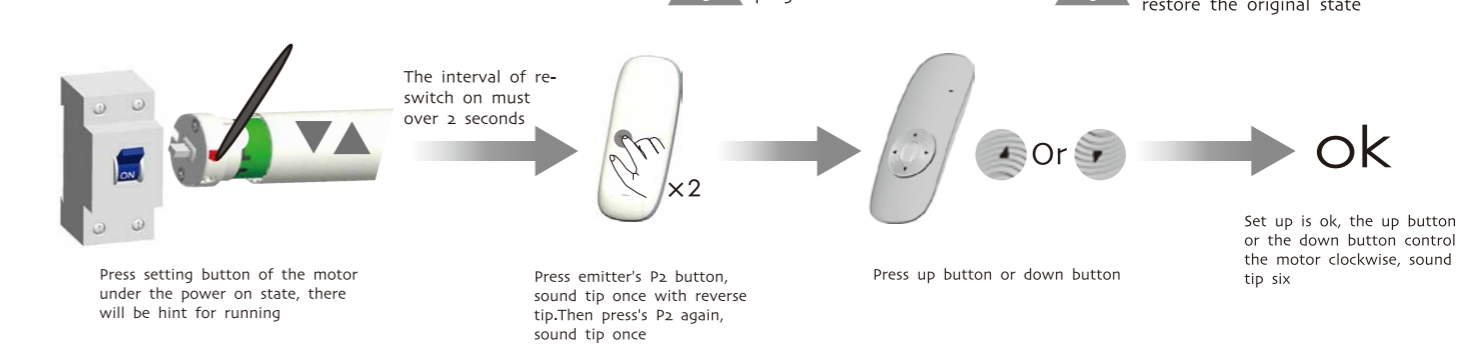
3 Bracket installation



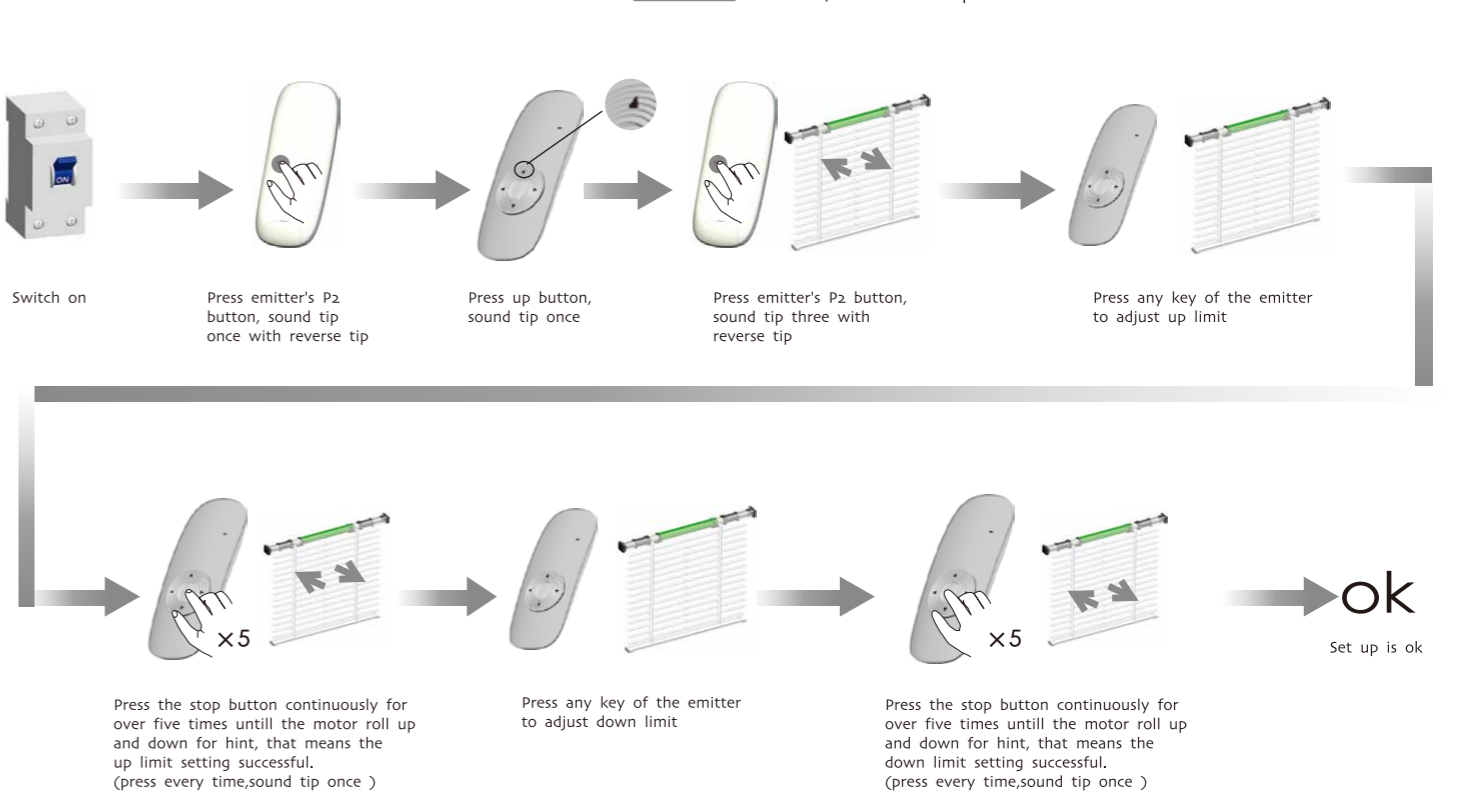
4 Setting up(1)



Setting up(2)



5 Set up/down limit position



6 The third limit point setting

